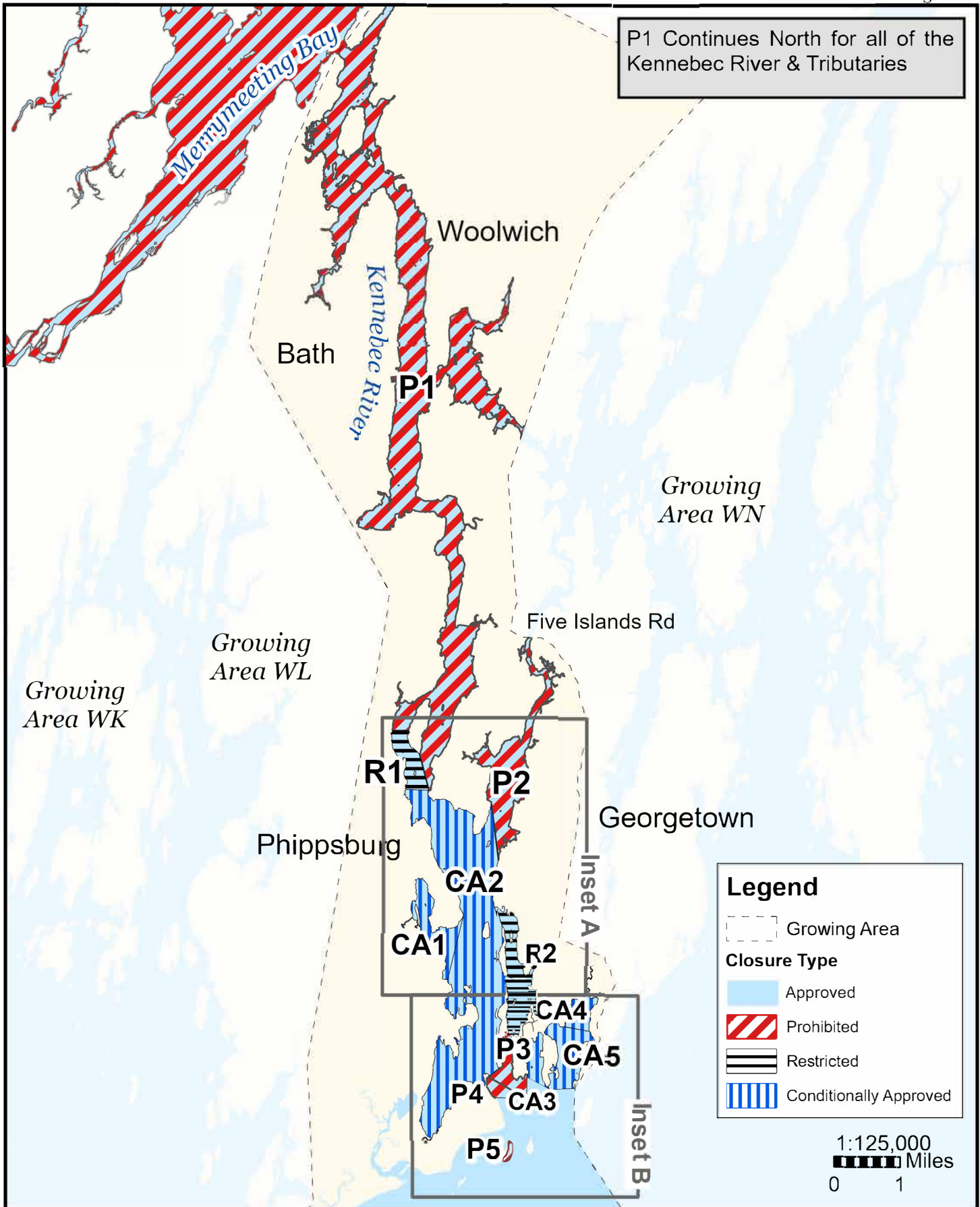




Maine Department of Marine Resources

Growing Area WM, Insets A - B
Woolwich, Bath, Georgetown, Phippsburg 7/18/25



P1 Continues North for all of the Kennebec River & Tributaries

Legend

- Growing Area
- Closure Type**
- Approved
- Prohibited
- Restricted
- Conditionally Approved

This map is provided as a courtesy. Read the provided legal notice for closure details. Closures are not shown outside of the designated growing area. Maritime navigational aids are for reference only and are not suitable for maritime navigation.

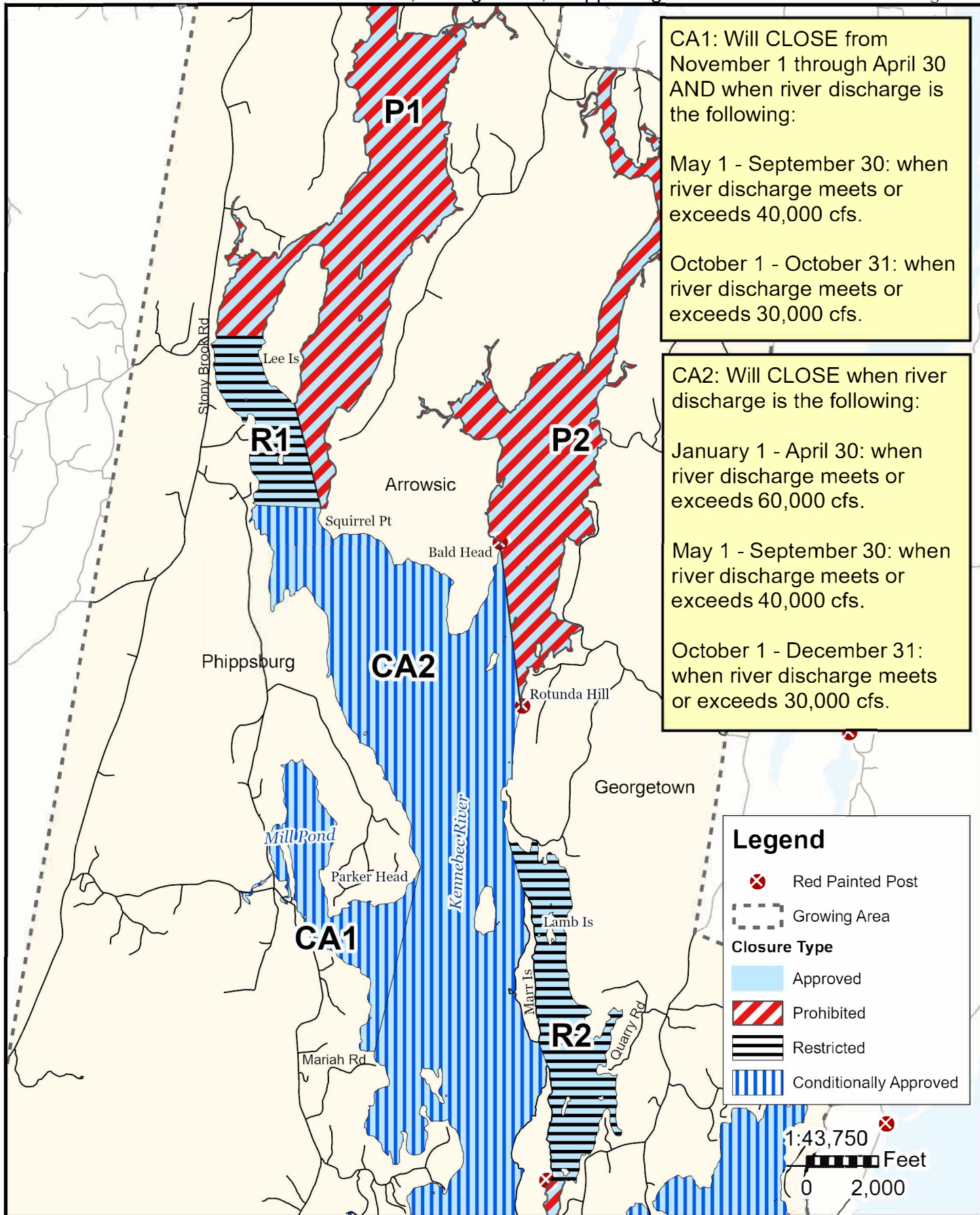
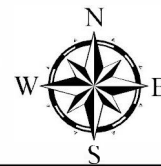


Maine Department of Marine Resources

Growing Area WM Inset A

July 18, 2025

Arrowsic, Georgetown, Phippsburg



CA1: Will CLOSE from November 1 through April 30 AND when river discharge is the following:

May 1 - September 30: when river discharge meets or exceeds 40,000 cfs.

October 1 - October 31: when river discharge meets or exceeds 30,000 cfs.

CA2: Will CLOSE when river discharge is the following:

January 1 - April 30: when river discharge meets or exceeds 60,000 cfs.

May 1 - September 30: when river discharge meets or exceeds 40,000 cfs.

October 1 - December 31: when river discharge meets or exceeds 30,000 cfs.

Legend

- Red Painted Post
- Growing Area

Closure Type

- Approved
- Prohibited
- Restricted
- Conditionally Approved

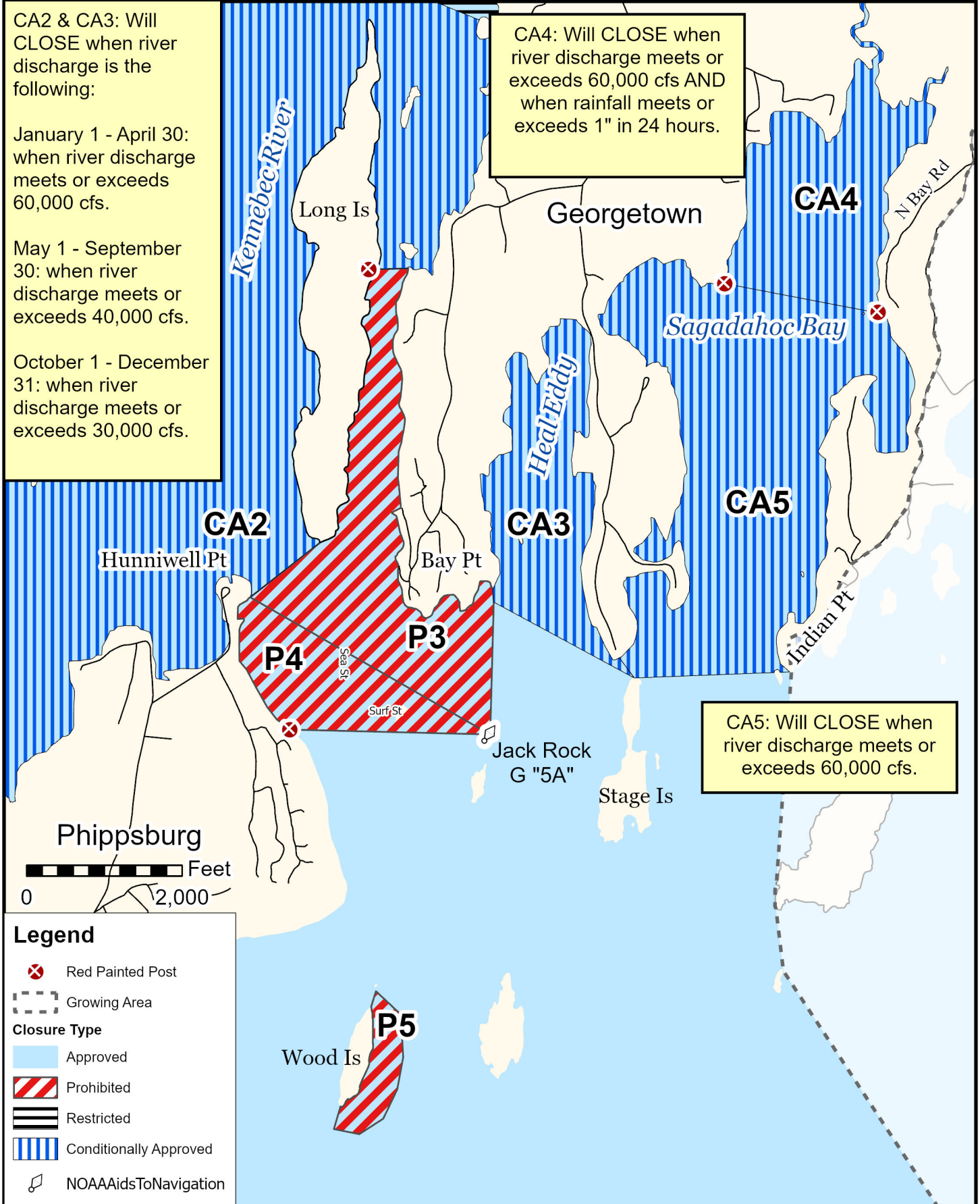
This map is provided as a courtesy. Read the provided legal notice for closure details. Closures are not shown outside of the designated growing area. Maritime navigational aids are for reference only and are not suitable for maritime navigation.



Maine Department of Marine Resources

Growing Area WM, Inset B Georgetown, Phippsburg

July 18, 2025



This map is provided as a courtesy. Read the provided legal notice for closure details. Closures are not shown outside of the designated growing area. Maritime navigational aids are for reference only and are not suitable for maritime navigation.