

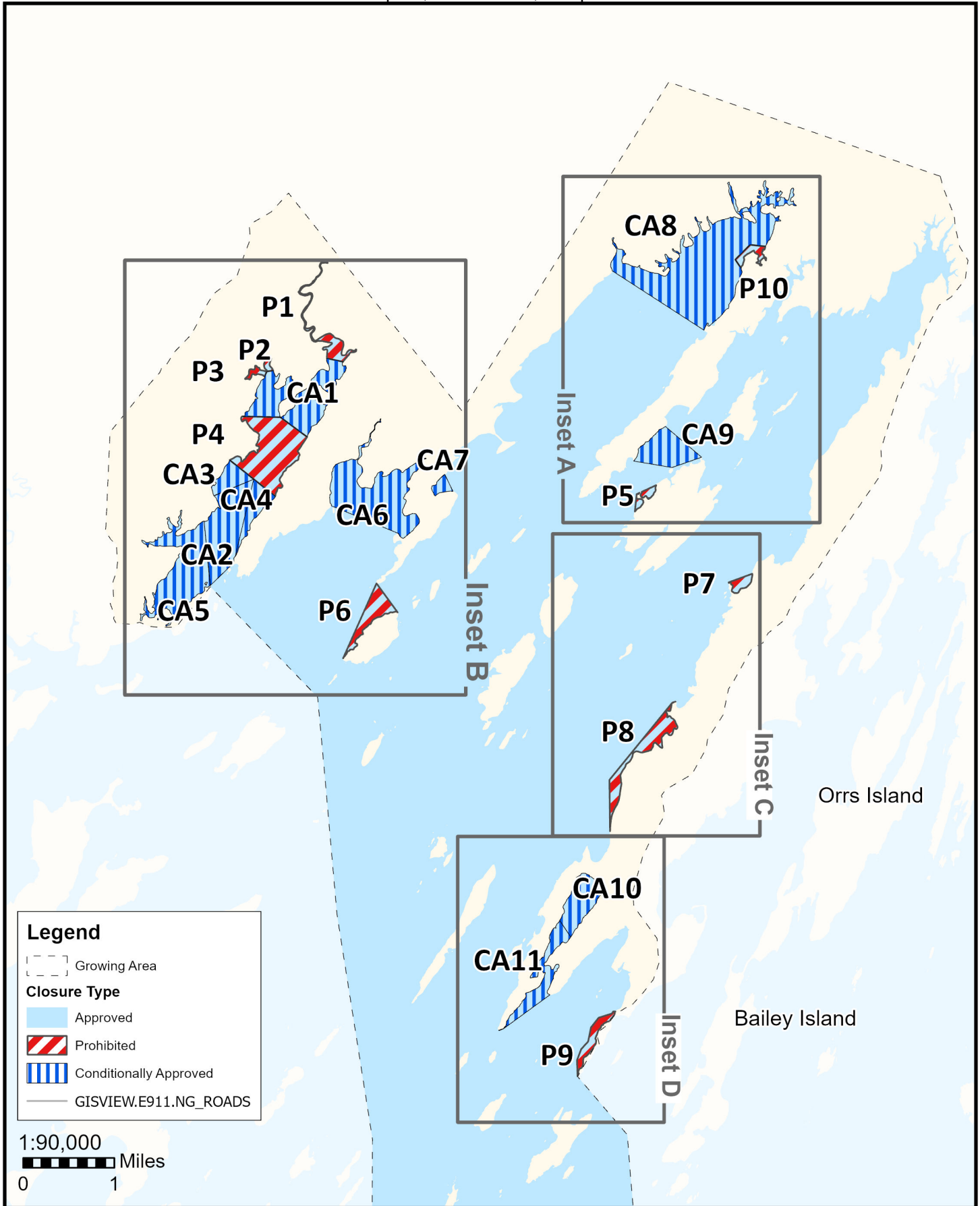


# Maine Department of Marine Resources

## Growing Area WJ, Insets A - D

Freeport, Brunswick, Harpswell

10/3/25



**Legend**

- [- - -] Growing Area
- Closure Type**
  - [Blue Box] Approved
  - [Red/White Stripes Box] Prohibited
  - [Blue/White Stripes Box] Conditionally Approved
- GISVIEW.E911.NG\_ROADS

1:90,000  
 0 1 Miles

This map is provided as a courtesy. Read the provided legal notice for closure details. Closures are not shown outside of the designated growing area. Maritime navigational aids are for reference only and are not suitable for maritime navigation.

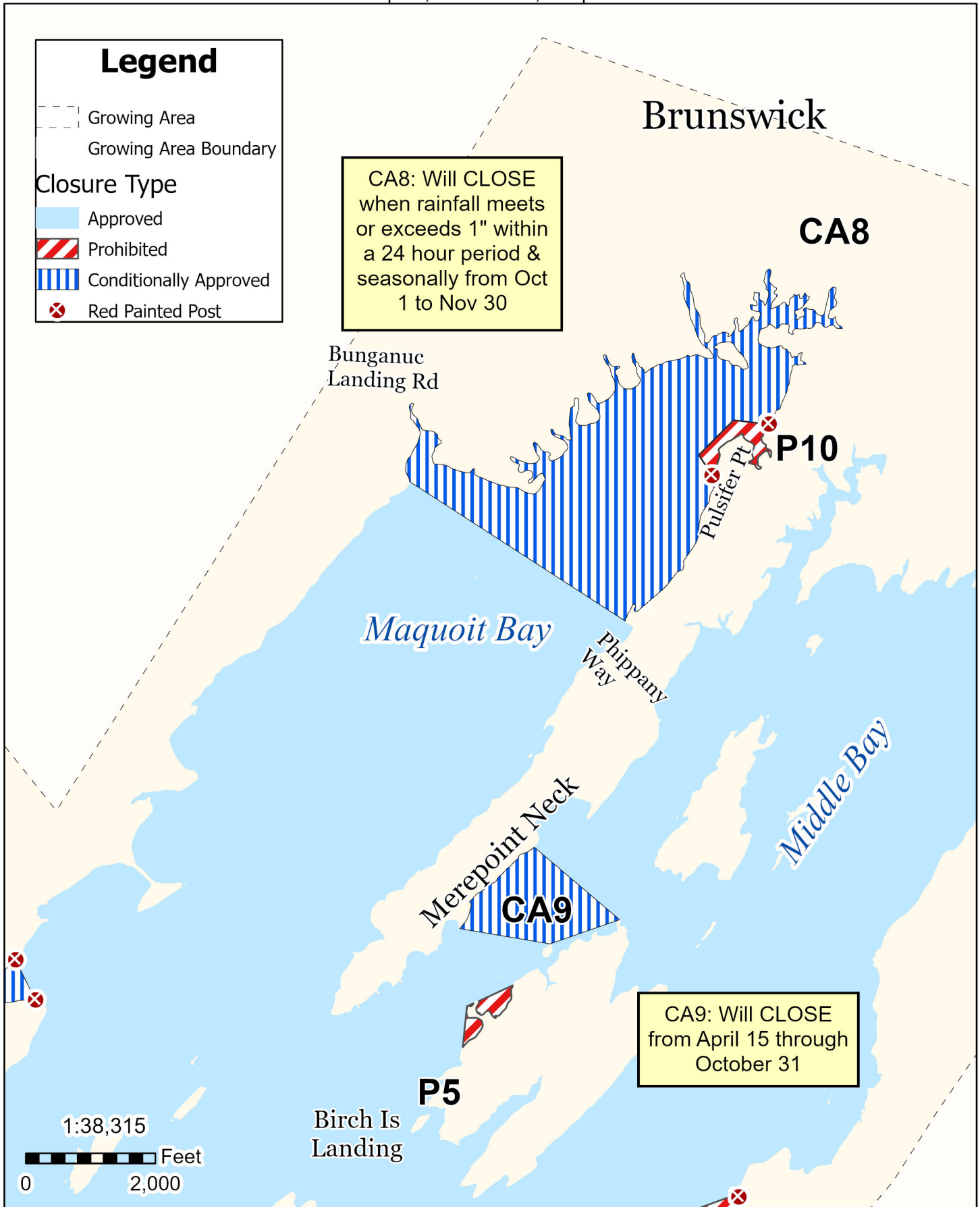


# Maine Department of Marine Resources

## Growing Area WJ, Inset A

Freeport, Brunswick, Harpswell

10/3/25



This map is provided as a courtesy. Read the provided legal notice for closure details. Closures are not shown outside of the designated growing area. Maritime navigational aids are for reference only and are not suitable for maritime navigation.

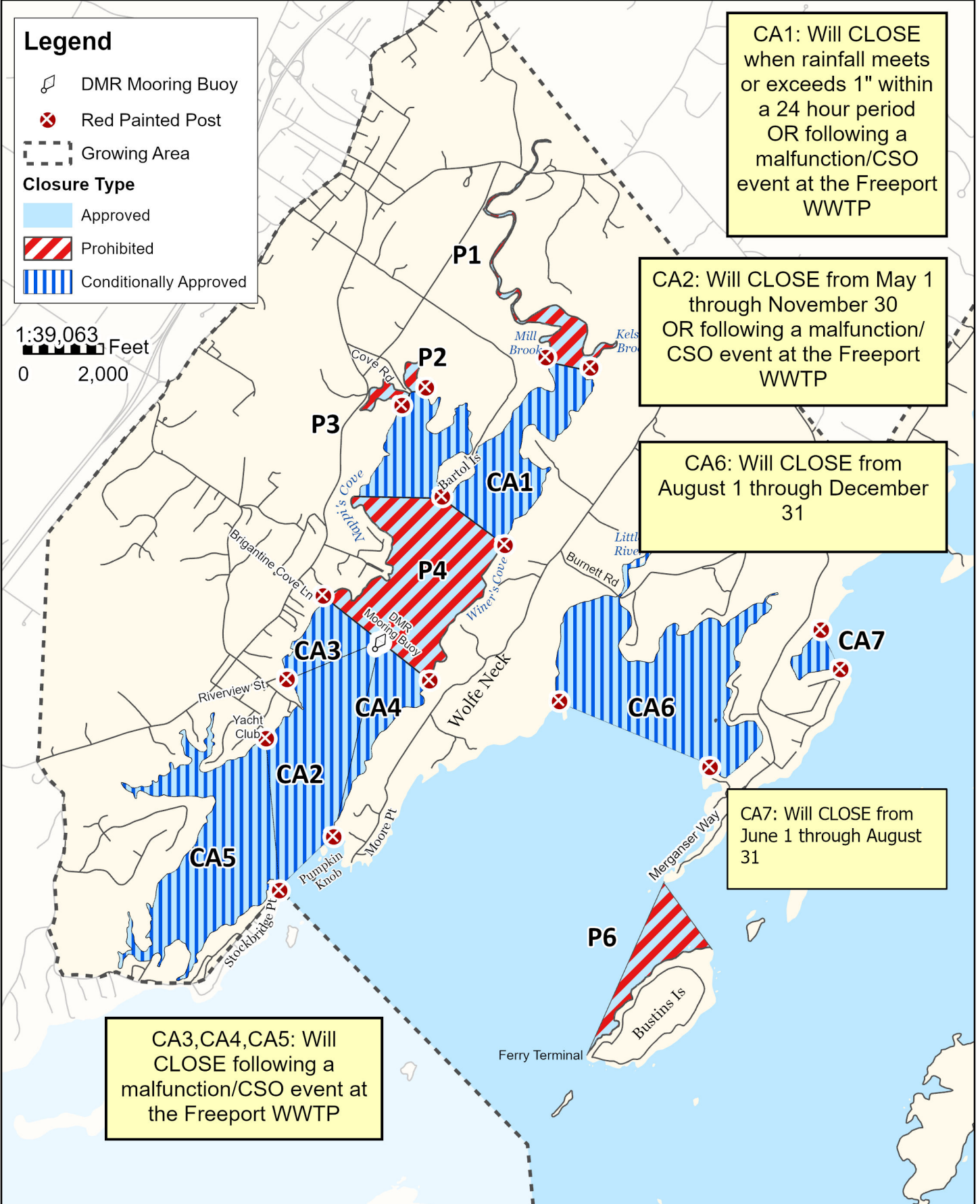


# Maine Department of Marine Resources

## Growing Area WJ, Inset B

Harraseeket River, Freeport

10/3/25



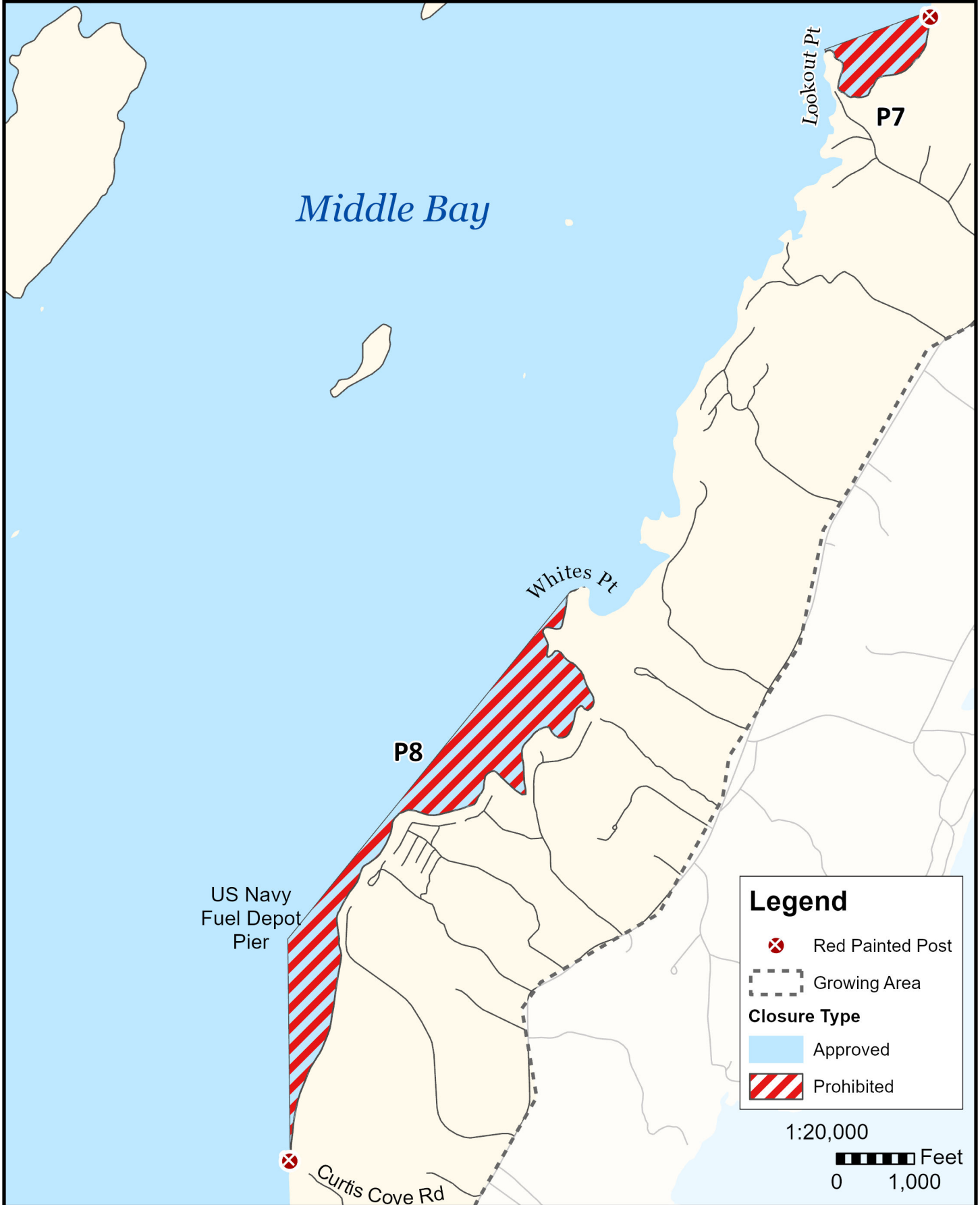
This map is provided as a courtesy. Read the provided legal notice for closure details. Closures are not shown outside of the designated growing area. Maritime navigational aids are for reference only and are not suitable for maritime navigation.



# Maine Department of Marine Resources

## Growing Area WJ, Inset C Harpswell

10/3/25



This map is provided as a courtesy. Read the provided legal notice for closure details. Closures are not shown outside of the designated growing area. Maritime navigational aids are for reference only and are not suitable for maritime navigation.

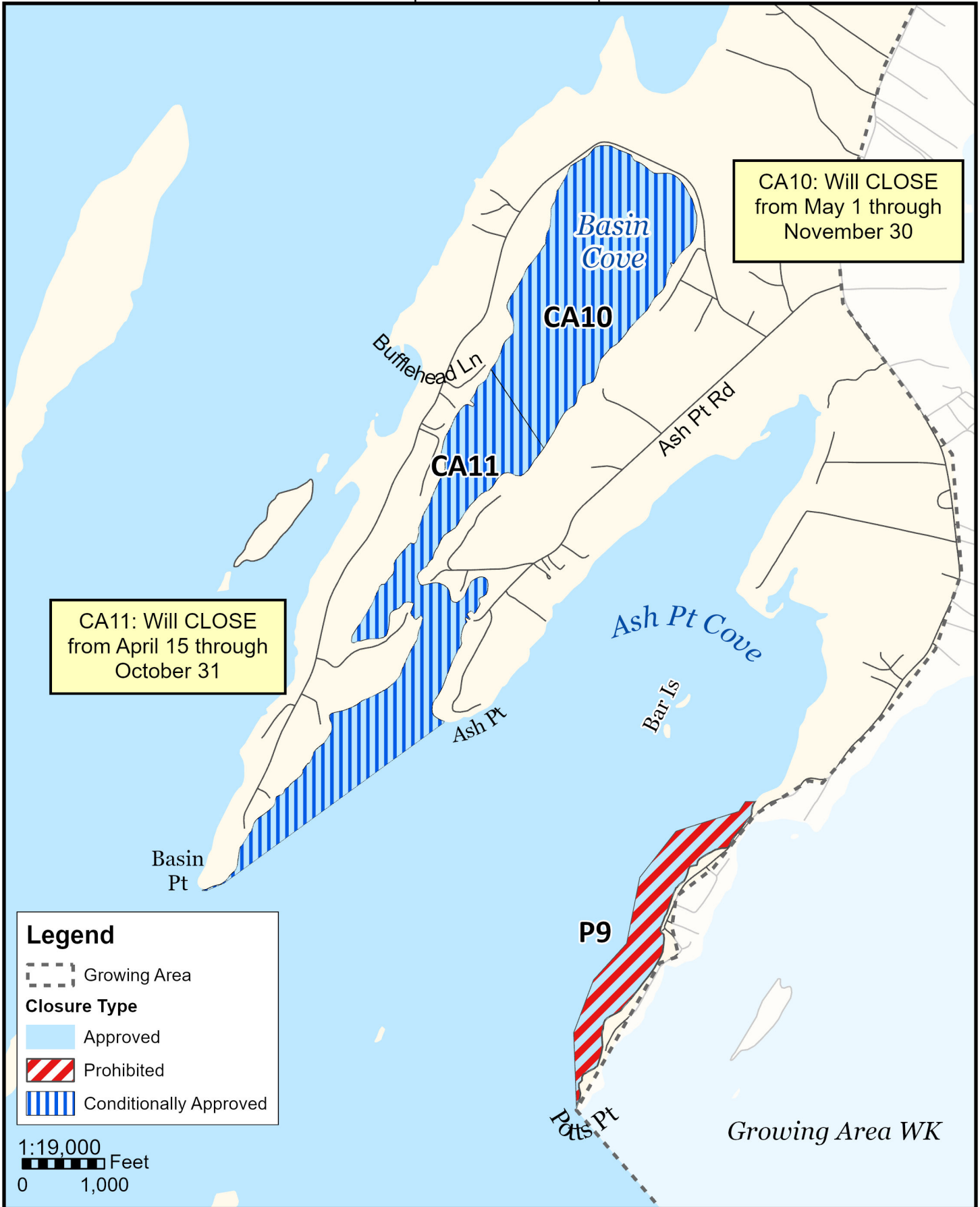


# Maine Department of Marine Resources

## Growing Area WJ, Inset D

West Harpswell & South Harpswell

10/3/25



This map is provided as a courtesy. Read the provided legal notice for closure details. Closures are not shown outside of the designated growing area. Maritime navigational aids are for reference only and are not suitable for maritime navigation.