

B-22-1

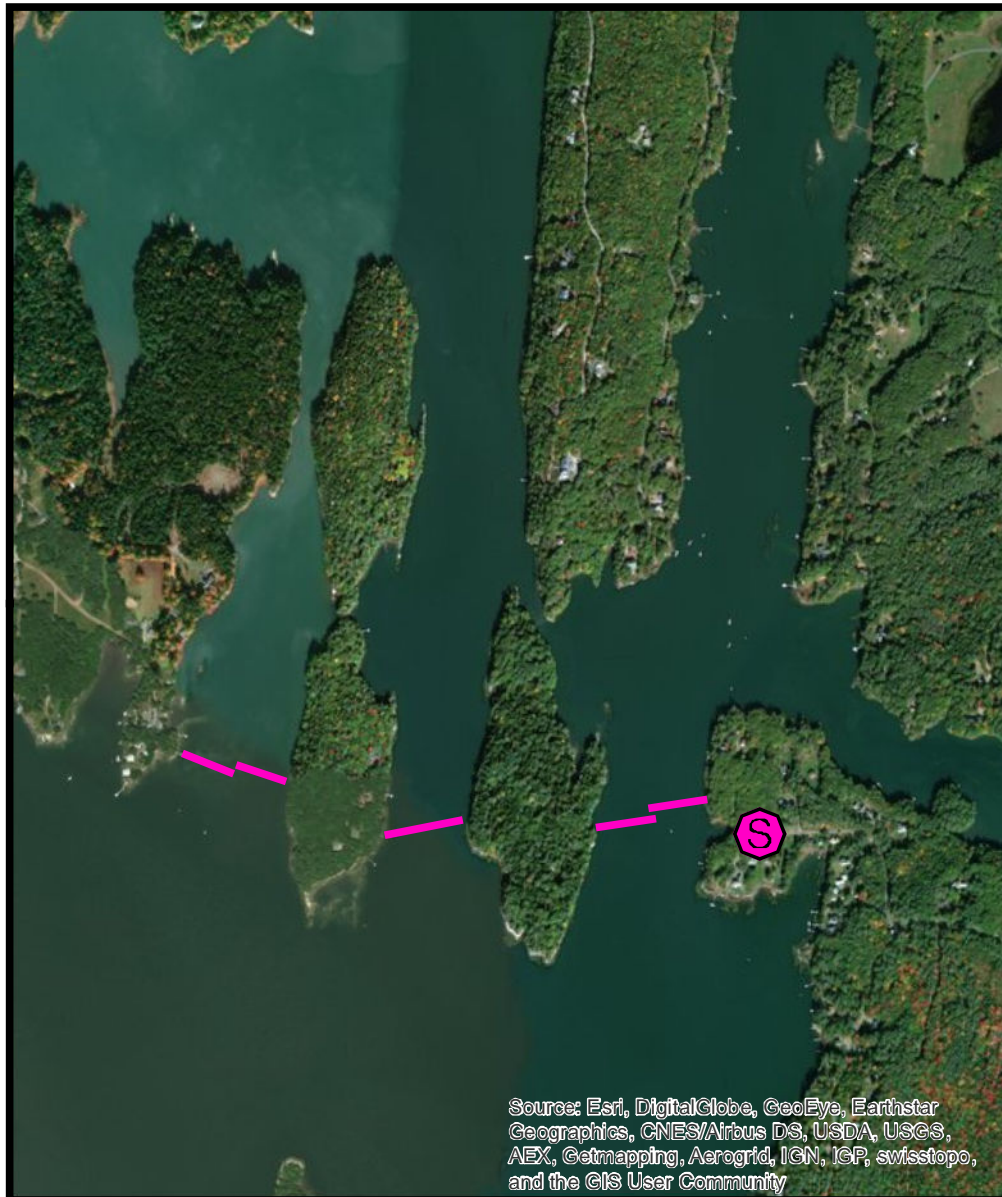
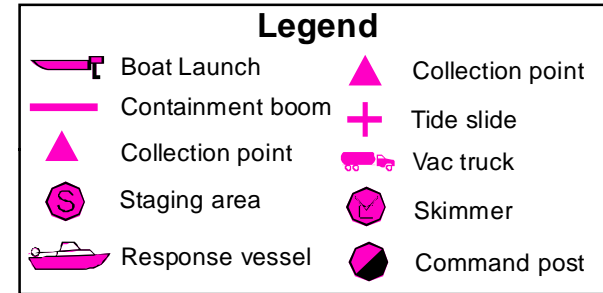
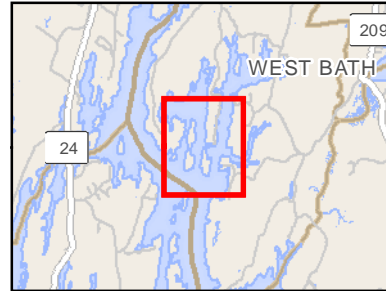
Back Cove

West Bath

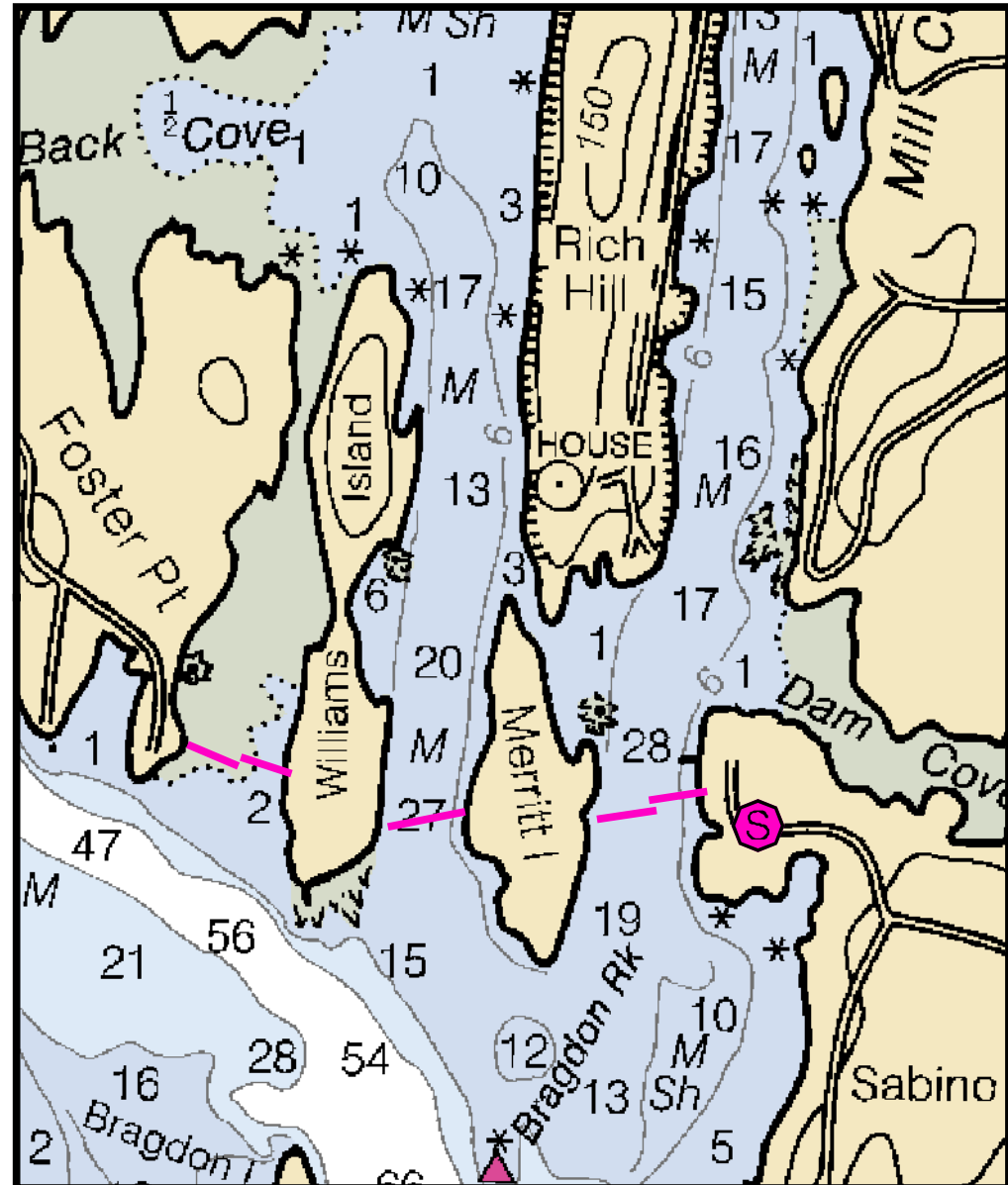
0 1,000 2,000
Feet



Printed: 2/16/2018



Source: Esri, DigitalGlobe, GeoEye, Earthstar
Geographics, CNES/Airbus DS, USDA, USGS,
AEX, Getmapping, Aerogrid, IGN, IGP, swisstopo,
and the GIS User Community



Back Cove

Town West Bath

Port Region Casco Bay

Latitude 43° 51.41' N

Longitude -69° 52.148'

Strategy B-22-1

NOAA Chart # 13290

ESI Map # 46A, 46B

EVI Map # 19

Resources At Risk

ESI Shoreline Type(s) Exposed, wave cut platforms
Exposed tidal flats

Environmental Concerns Back Cove has sheltered tidal flats, shorebird habitat, shellfish beds, aquaculture and marine worm habitat

Strategy Information

Strategy Purpose Exclude oil from Back Cove

Work Assignment Deploy two 400' sections of boom between Sabino Point and Merrit Island.

Deploy 500' of boom between Merrit Island and Williams Island.

Deploy two 400' sections of boom between Williams Island and Foster Point.

Staging Areas Sabino Point Landing, West Bath.

Site Access Sabino Point Landing, West Bath. Nearest address: 301 Sabino Road

Nearest Boat Ramp Sabino Point Landing, West Bath. Launch is "unimproved" but can launch from trailer and is all tide.

Collection Points N/A. Exclusion

Approx. Tidal Range (feet) 9

Max Current (knots) **Flood** 0 - .5 knots **Ebb** **Source** Local knowledge estimate

Special Instructions

Recommended Equipment / Resources

Length of Boom (feet) **Type of Boom** 12" - 24" containment boom

Recommended Equipment (Minimum) 4 - anchor systems: 35 lb. Danforth or equivalent and line for 3:1 scope plus tag line with buoy
6 - shoreside connections
2 - workboats with minimum 90 hp
2 - boat operators
4 - laborers

Unless otherwise indicated, the boom length given is the distance measured on the chart.
Actual length required may vary with conditions.