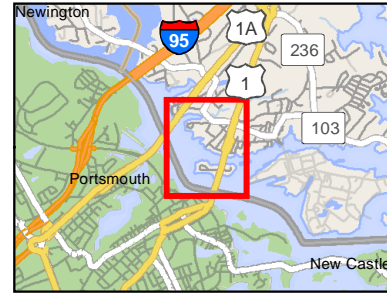












Kittery

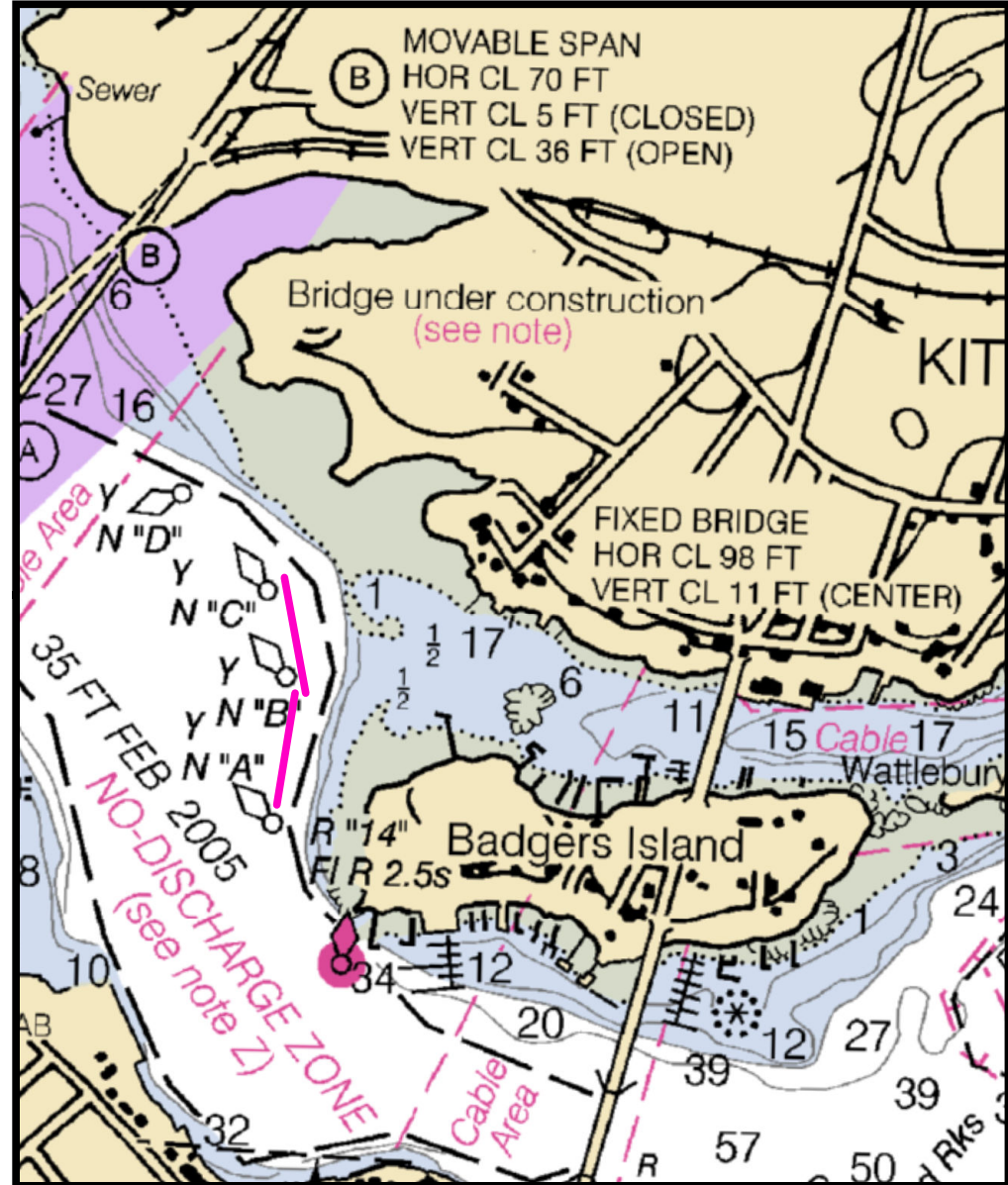
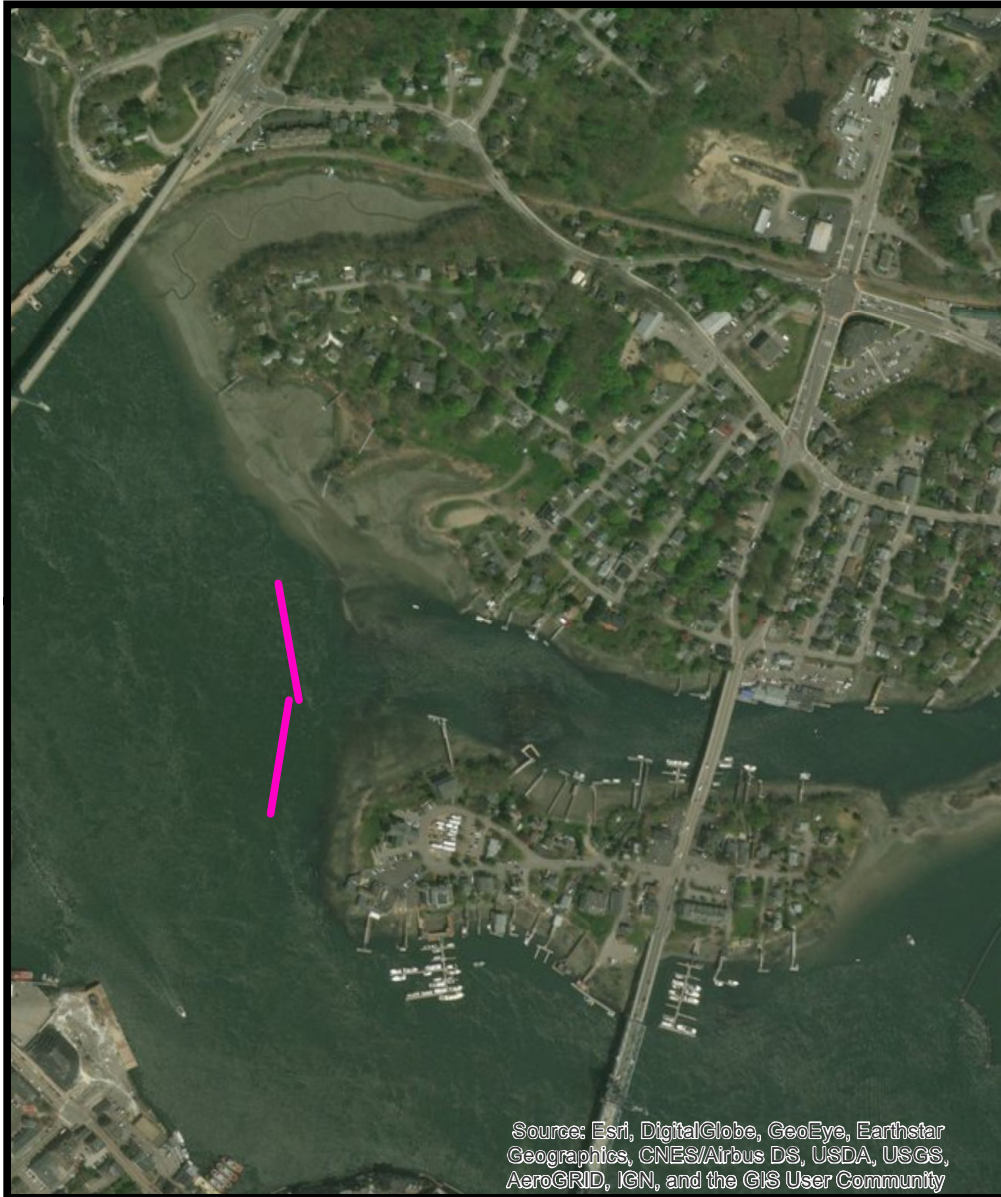


Printed: 4/11/2018



Legend

| | | | |
|---|------------------|---|------------------|
|  | Boat Launch |  | Collection point |
|  | Containment boom |  | Tide slide |
|  | Collection point |  | Vac truck |
|  | Staging area |  | Skimmer |
|  | Response vessel |  | Command post |



Between Kittery and Badgers Island

Town Kittery, ME

Port Region New Hampshire and Southern Maine

Latitude 43° 05.049 N **Longitude** 70° 45.377 W

Strategy A-31-1

NOAA Chart # 13283_1 **ESI Map #** 54D

EVI Map # 2

Resources At Risk

ESI Shoreline Type(s) Sheltered tidal flats
Sheltered, solid man-made structures

Environmental Concerns Primary concern is to avoid need to clean up sheltered areas behind Badger's Island

Strategy Information

Strategy Purpose To deflect oil from the channel between Badger's Island and Kittery mainland

Work Assignment Deploy 450' of boom adjacent to buoys "C" and "B", and 450' of boom adjacent to buoys "B" and "A" at the edge of the channel where water shallows

Staging Areas Access at:
(1) Traip Academy boat launch, 12 Williams Ave., Kittery (limited parking)
(2) Kittery town boat launch, Pepperell Road, Kittery (not all tide)
(3) Pierce's Island boat launch, Portsmouth
(4) PNSY (with Navy permission / credentialing)

Site Access By water

Nearest Boat Ramp Same as staging areas

Collection Points N/A

Approx. Tidal Range (feet) 9

Max Current (knots) **Flood** **Ebb** 1.1 **Source** local knowledge estimate

Special Instructions Current measurements show that oil will tend to follow the main channel of the river on an ebb tide

Recommended Equipment / Resources

Length of Boom (feet) 2000

Type of Boom Harbor Boom

Recommended Equipment (Minimum) 4 - anchor systems: 35 lb. Danforth or equivalent and line for 3:1 scope plus tag line with buoys.
2 - workboats with minimum 90 hp
2 - boat operators
4 - laborers

Unless otherwise indicated, the boom length given is the distance measured on the chart.
Actual length required may vary with conditions.