

Maine Land Use Planning Commission Map of Primary and Secondary Locations

MAP NOTES

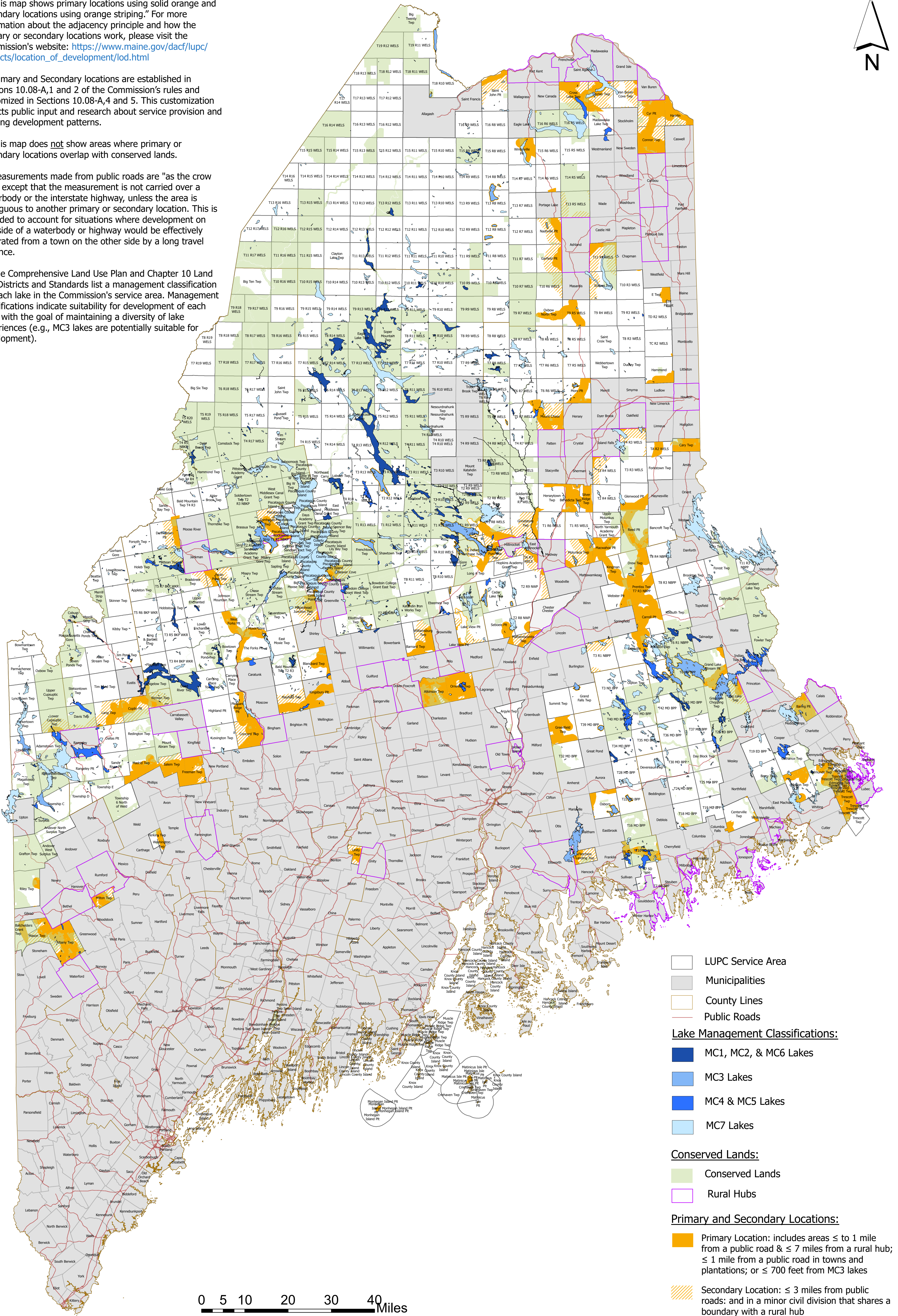
1. This map shows primary locations using solid orange and secondary locations using orange striping. For more information about the adjacency principle and how the primary or secondary locations work, please visit the Commission's website: https://www.maine.gov/dacf/lupc/projects/location_of_development/lod.html

2. Primary and Secondary locations are established in Sections 10.08-A,1 and 2 of the Commission's rules and customized in Sections 10.08-A,4 and 5. This customization reflects public input and research about service provision and existing development patterns.

3. This map does not show areas where primary or secondary locations overlap with conserved lands.

4. Measurements made from public roads are "as the crow flies" except that the measurement is not carried over a waterbody or the interstate highway, unless the area is contiguous to another primary or secondary location. This is intended to account for situations where development on one side of a waterbody or highway would be effectively separated from a town on the other side by a long travel distance.

5. The Comprehensive Land Use Plan and Chapter 10 Land Use Districts and Standards list a management classification for each lake in the Commission's service area. Management classifications indicate suitability for development of each lake, with the goal of maintaining a diversity of lake experiences (e.g., MC3 lakes are potentially suitable for development).



- LUPC Service Area
- Municipalities
- County Lines
- Public Roads
- Lake Management Classifications:**
- MC1, MC2, & MC6 Lakes
- MC3 Lakes
- MC4 & MC5 Lakes
- MC7 Lakes
- Conserved Lands:**
- Conserved Lands
- Rural Hubs
- Primary and Secondary Locations:**
- Primary Location: includes areas \leq 1 mile from a public road & \leq 7 miles from a rural hub; \leq 1 mile from a public road in towns and plantations; or \leq 700 feet from MC3 lakes
- Secondary Location: \leq 3 miles from public roads; and in a minor civil division that shares a boundary with a rural hub

0 5 10 20 30 40 Miles